



Art Identity Migration

THIS WEEK AT BEN URI

A feast of art, culture and fascinating life stories ...
FREE and at any time to suit you!
benuri.org

HERE

For many today is return to work day after the holiday break. No such luck here as we have been preparing the gallery for some refurbishment on the lower floor starting today. As you will have seen from our 2025 programme we do not re-open until the 22nd January when we will have Part 2 of our Charity Art Sale with exciting new works donated to be sold for the benefit of the Research Unit. Mark your diaries as we will stay open until 7pm on the 22nd and 23rd with wine flowing!

THERE

Yes we have art works on loan to museums in both Eastbourne and Frankfurt but given the weather forecast probably best to stick closer to home.

We have the pleasure and privilege of regularly working with the London based *Roberts Institute of Art* and can thoroughly recommend their new show opening on Wednesday and running to the 9 February. They have a terrific collection and have curated an intriguing show on the themes of *Attention, Compassion and Curiosity*. Another huge attraction is its location being the stunning Fitzrovia Chapel which was where the King spoke from on Xmas day. Don't miss this rare opportunity to see both.

Don't forget to diary the 22nd to 26th January for the **London Art Fair** in Islington which is a modern British and contemporary art-fest of the 1st order.

EVERYWHERE

The weather this week in the UK, most of Europe, the East coast and middle of America is grim and a compelling reason for, if you can, having the heating on all day and staying at home.

Whether its audio or visual we have both in abundance at benuri.org but if you want to read then explore benuri.org/researchunit/ and chose from over 400 essays, reviews, dissertations or just search our archives to discover all sorts of amazing events in Ben Uri's 110 year history.

Stay safe and enjoy Ben Uri's unparalleled online content.

Please share This Week with your friends and family

Have a great Ben Uri week!

FOLLOW US ON SOCIAL MEDIA



We need your support: If you believe in our mission and the depth of research and resources we offer then please buy us a coffee, or many coffees, or even lunch or dinner!



MONDAY 6 JANUARY

ARTIST OF THE WEEK

KATERINA WILCZYNSKI

Graphic artist Katerina Wilczynski was born into a Jewish family in Posen, Prussia (now Poznań, Poland) on 7 July 1894. She spent much of her early life in Berlin and studied art in Leipzig (1916–17), then Berlin (1918), before moving to Paris. In 1930, Wilczynski travelled to Rome on a Prix de Rome scholarship, where her work included drawings of churches and monuments in the city. She remained until 1938 when the new racial laws in Italy stripped many Jews of their rights, and in 1939, she moved to England, settling in London. During the Second World War, she drew London buildings and landmarks damaged by bombing and contributed pieces to the war artists exhibitions held in the National Gallery. At least one of these works was purchased by the War Artists' Advisory Committee. Postwar she travelled widely including in Greece and Italy; holding two solo exhibitions at the émigré run Roland, Browne & Delbanco Galleries in 1946 and 1949, followed by an exhibition of her Greek portraits and landscapes at the Ansdell Gallery, London in 1970. Katerina Wilczynski died in London, England on 12 November 1978. Ben Uri is honoured to have been gifted her artistic estate and plan our first exhibition of her work in November this year.



Learn more about Katerina Wilczynski and 400 other artists at the Ben Uri Collection

TUESDAY 7 JANUARY



Drawing, c. 1953. Coloured chalk on paper ©The Gustav Metzger Foundation

EXHIBITION OF THE WEEK

TOWARDS ABSTRACTION AND BEYOND.

BECOMING GUSTAV METZGER: UNCOVERING THE EARLY YEARS, 1945-59

Discover this and more than 80 other exhibitions on benuri.org

WEDNESDAY 8 JANUARY

ARTWORK OF THE WEEK

BRICK LANE AND HENEAGE STREET
BY JOHN ALLIN (1934-1991)



View this work and 900 hundred others in the Ben Uri Collection

THURSDAY 9 JANUARY



PERSONALITY OF THE WEEK

ENAM GBEWONYO

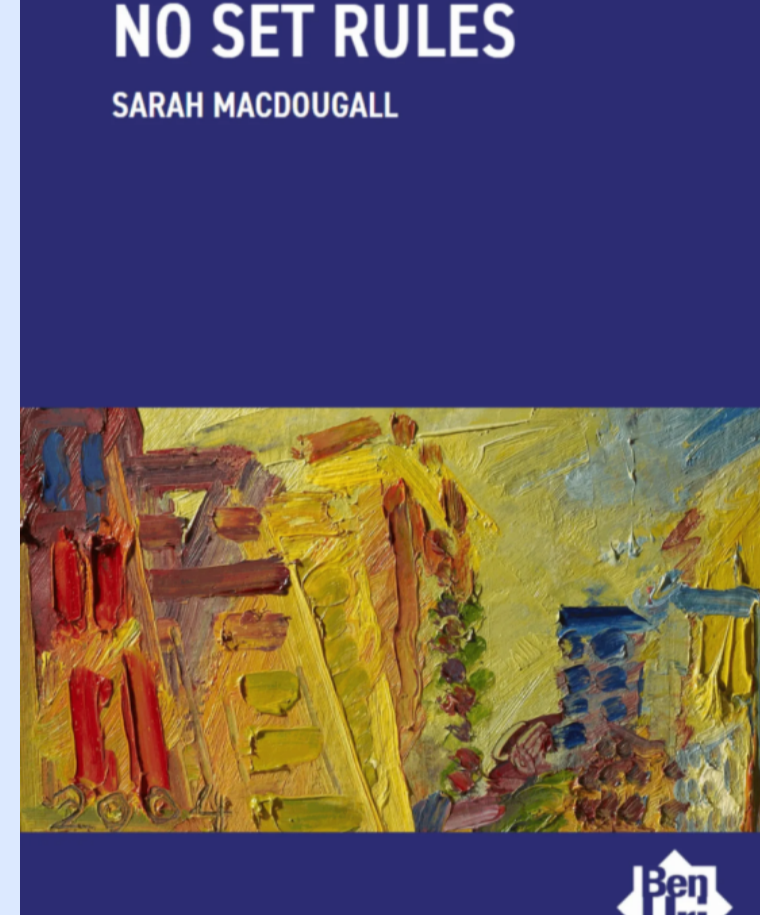
Enam Gbewonyo was born into a family of Ghanaian descent in London in 1980, earning her BA in European Textile Design from the Bradford School of Art and Design in 2001. Through her art, Gbewonyo examines themes such as identity, femininity, and the human condition, using performance and textiles as her primary mediums. Starting in 2016, she incorporated the use of tights into her work, examining how this garment has been manipulated by societal norms to serve as another means of marginalisation, exclusion, and symbolic castration for Black women.

Learn more about Enam Gbewonyo and over 3000 others from diverse backgrounds and countries, who have migrated to Britain at the Ben Uri Research Unit.

FRIDAY 10 JANUARY

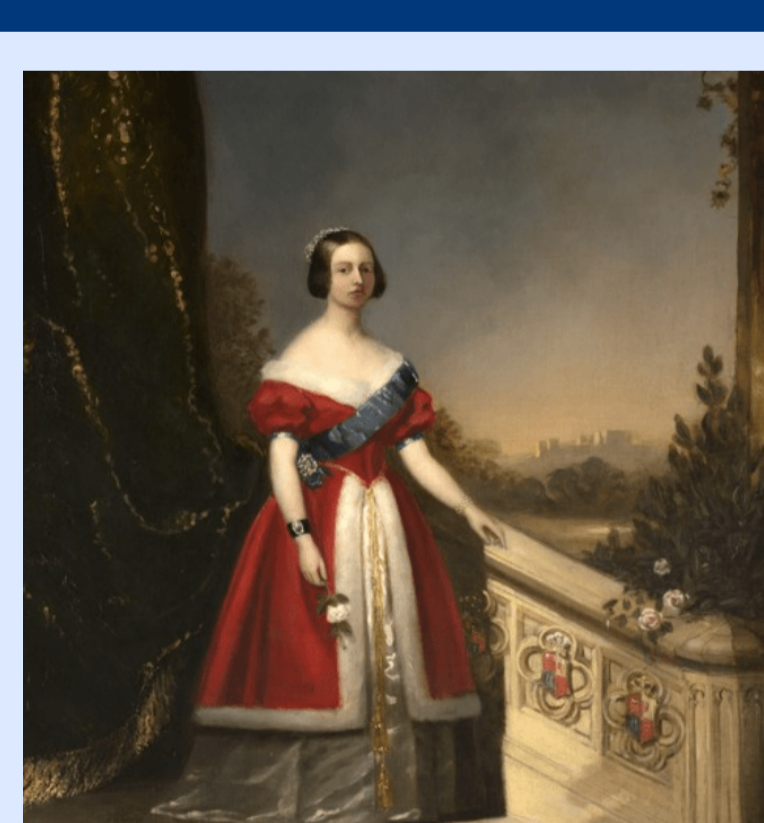
ESSAY OF THE WEEK

NO SET RULES
BY SARAH MACDOUGALL



Read this and 400 other essays on refuge and immigrant artists here

SATURDAY 11 JANUARY



PODCAST OF THE WEEK

SOLOMON HART PORTRAIT OF QUEEN VICTORIA

Listen to this podcast and over 100 more from Ben Uri Radio

SUNDAY 12 JANUARY

VIDEO OF THE WEEK

BEN URI TALKING ART:
ROMAN HALTER



Watch this video and 100 more videos on BU TV

Ben Uri
Research Unit

- 80+ Online and 3D Exhibitions
- 100+ Podcasts & interviews
- 100+ School and Family programmes
- 100+ Arts and Mental Health interventions
- 100+ Films and artist insights
- 400+ Collection artist biographies
- 400+ Research papers, essays, catalogues and PhD theses
- 600+ Archive exhibitions records
- 9300+ Collection artworks on benuricollection.org.uk
- 3000+ Research Unit profiles on buru.org.uk / diaspora-artists.net
- 10,000 Pages of archives from 1915

Benuri.org & Buru.org.uk open 24/7 to suit you / Gallery exhibitions open every Wednesday to Friday at Boundary Road, London NW8