



Art Identity Migration

THIS WEEK AT BEN URI

A feast of art, culture and fascinating life stories ...
FREE and at any time to suit you!
benuri.org

HERE

It is the **Last Week - your Last Chance** to view exciting new work which has been donated for sale this Wednesday to Friday from 10 - 530 pm.

Don't miss this last opportunity to adorn your walls or give a family member of friend a gift to remember at great prices.

Bring a friend to our drinks reception on Thursday from 5pm - 8pm and support our Research Unit.

THERE

When was the last time you visited the ICA on The Mall? Forever a platform for the new it is celebrating its 75th birthday this year.

It remains London's premier showcase of contemporary art and artists and their current show 'New Contemporaries' is not to be missed.

EVERYWHERE

It appears the diagnosis of a growing number of the wealthy economies in the world is the source of their problems lie with immigrants and immigration.

23 years ago when Ben Uri re-opened focusing on the universality of migration and 6 years ago when we further evolved into a Digital First Academic institution led by our Research Unit recording the Jewish, Refugee and wide Immigrant contribution to British art since 1900 many thought on both occasions we were wrong.

We believe a thriving, agile, intellectually robust Ben Uri led by buru.org.uk with over 1000 profiles and diaspora-artists.net with over 2300 profiles on the contribution immigrants have made to our rich cultural mosaic is vital to be able to demonstrate an important and persuasive reality.

Ben Uri's Research Unit plays an important role not just in university education but more widely as a building block within social integration in the UK as we record the impact of refugees and immigrants to Britain from over 100 counties to date.

Check out buru.org.uk and diaspora-artists.net and be amazed.

Please share This Week with your friends and family

Have a great Ben Uri week!

FOLLOW US ON SOCIAL MEDIA



We need your support: If you believe in our mission and the depth of research and resources we offer then please buy us a coffee, or many coffees, or even lunch or dinner!



MONDAY 3 FEBRUARY

ARTIST OF THE WEEK

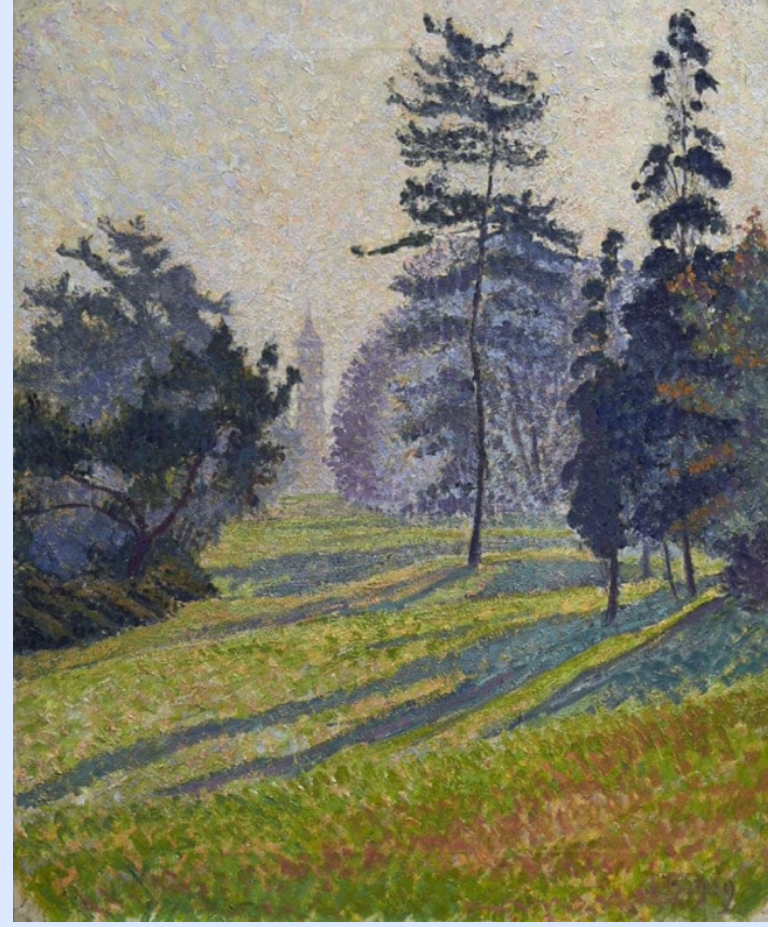
NAUM GABO

A pioneer of constructive art, Naum Gabo was born Neyemiya Borisovich Pevzner into a Jewish family in Bryansk, Russia on 5 August 1890. His older brother was fellow artist Antoine Pevsner and Gabo changed his name, in order to avoid confusion between them. He began making sculptures in Norway but returned to Russia at the time of the Revolution. In 1920 Gabo wrote the Realistic Manifesto, an expression of the aims and philosophy behind his art. Two years later he left Russia for Berlin, where he worked on sculptures and architectural projects close to the Bauhaus and the De Stijl groups until 1932.



Learn more about Naum Gabo and 400 other artists at the Ben Uri Collection

TUESDAY 4 FEBRUARY



EXHIBITION OF THE WEEK

HOMELESS & HIDDEN: A WORLD CLASS COLLECTION HOMELESS AND HIDDEN

Discover this and more than 80 other exhibitions on benuri.org

WEDNESDAY 5 FEBRUARY

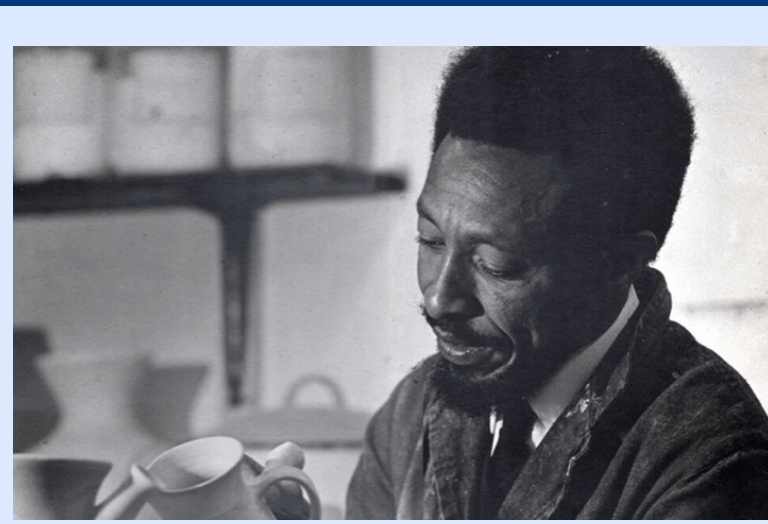
ARTWORK OF THE WEEK

PORTRAIT OF PROFESSOR NORMAN BENTWICH BY ARCHIBALD ZIEGLER (1903-1971)



View this work and 900 others in the Ben Uri Collection

THURSDAY 6 FEBRUARY



PERSONALITY OF THE WEEK

MO ABBARO

Mo Abbarno was born in 1935 in Abu Jibayha, Sudan. In 1959, he won a scholarship to study ceramics at Central School of Arts and Crafts in London, followed by further courses in industrial pottery and chemical analysis in North Staffordshire. He returned to Sudan in the early 1960s to teach ceramics, then settled permanently in England in 1966 and taught at the Camden Arts Centre for more than 20 years.

Learn more about Mo Abbarno and over 3000 others from diverse backgrounds and countries, who have migrated to Britain at the Ben Uri Research Unit.

FRIDAY 7 FEBRUARY

ESSAY OF THE WEEK

BEN URI ART SOCIETY AND MUSIC IN EXILE 1931-1960 BY RACHEL DICKSON



Read this and 400 other essays on refugee and immigrant artists to Britain here

SATURDAY 8 FEBRUARY



PODCAST OF THE WEEK

ARTIST AHMED PARVEZ

Ahmed Parvez was born in Rawalpindi, in what was then known as British India (now Pakistan), in 1926. He began pursuing art as a career in 1952, and immigrated to London, England in 1955, where he initially struggled to establish his artistic career. Founding the Pakistan Group of painters, he was also appointed honorary secretary of the Council of Commonwealth Artists in 1955, eventually becoming a noted colourist, participating in many UK exhibitions, before returning to Pakistan in 1964.

Listen to this podcast and over 100 more from Ben Uri Radio

SUNDAY 9 FEBRUARY

VIDEO OF THE WEEK

ARTIST MICHELE FRANKLIN INTERVIEWED BY SARAH MACDOUGALL



Watch this video and 100 more videos on BU TV

Ben Uri
Research Unit

- 80+ Online and 3D Exhibitions
- 100+ Podcasts & Interviews
- 100+ School and Family programmes
- 100+ Arts and Mental Health interventions
- 100+ Films and artist insights
- 400+ Collection artist biographies
- 400+ Research papers, essays, catalogues and PhD theses
- 600+ Archive exhibitions records
- 900+ Collection artworks on benuricollection.org.uk
- 3300+ Research Unit profiles on buru.org.uk / diaspora-artists.net
- 10,000 Pages of archives from 1915

Benuri.org & Buru.org.uk open 24/7 to suit you / Gallery exhibitions open every Wednesday to Friday at Boundary Road, London NW8