



Art Identity Migration

THIS WEEK AT BEN URI

A feast of art, culture and fascinating life stories ...
FREE and at any time to suit you!
benuri.org

HERE

The visitor numbers in the first full week of our survey of the artistic range of Franciszka Themerson at the Gallery in Boundary Road have broken all records. A queue on opening on Thursday & Friday! No wonder as word of mouth permeates as it is an elegant and fascinating companion to her show at Tate Britain.

We are greatly honoured and grateful that the estate has gifted 3 intriguing drawings to enhance our museum collection. One from 1960, one from 1973 and the third from 1984 to allow viewers in perpetuity to witness and explore the development across 3 decades. Each are on display in our current exhibition.

In recognition of International Women's Day on Saturday we are delighted to give all visitors this month a free copy of the beautifully designed and produced catalogue courtesy of the estate to whom we are greatly appreciative.

The exhibition is open every Wednesday to Friday from 10 to 5:30 pm and is Not to be missed!

THERE

This week we are on our way to France to sign a historic agreement for an important partnership exhibition taking Ben Uri to a major museum in the centre of Paris in the autumn of 2027.

Outside Britain's national museums we are told this is a first for a British art museum exhibition to be approved by Paris Musees authority. The exhibition is a direct result of our focus on scholarship and immigrant artists to Britain through our **Research Unit**.

We are very excited and look forward to announcing more details in due course.

EVERYWHERE

Many countries celebrate the achievements of women at different times of the year but Saturday 8th March is *International Women's Day*.

The UK & International art museum collection has on average less than 5% women artists. We are very proud that Ben Uri has some 30%.

A fascinating and revealing statistic is that the % of women artists under study within our *Research Unit recording the Refugee and Immigrant contribution to British Art since 1900* is 39% which reveals the width and depth of unsung heroes principally because they were not men!

Given the 39% of immigrant artists to this country being women it would appear that Ben Uri's 30% of Collection artists being women more accurately reflects the appropriate level compared to the National average of some 5%.

Please share This Week with your friends and family

Have a great Ben Uri week!

FOLLOW US ON SOCIAL MEDIA



We need your support: If you believe in our mission and the depth of research and resources we offer then please buy us a coffee, or many coffees, or even lunch or dinner!



MONDAY 3 MARCH

ARTIST OF THE WEEK

ELSA FRAENKEL

Sculptor Elsa Fraenkel (nee Rothschild) was born into a prosperous Jewish family in Bensheim, Germany on 25 August 1892. She trained at the Karlsruhe Academy. In 1918 she married and moved to Hanover, where she was a member of Dadaist Kurt Schwitters' cultural circle in the 1920s. Their friendship was later rekindled in exile in England and she brought with her two artworks by Schwitters, including Untitled: für Frau Fränkel (purchased in 2019 by Ben Uri from proceeds of our 2018 de-accession programme), inscribed to her and dated 1928, providing a direct link between these two refugees from Nazism. Fraenkel also had a long friendship with Piet Mondrian. Fraenkel remained in Hanover until 1933, travelling annually to Paris. She specialised in portrait sculpture, and her works were exhibited in Hanover, Berlin, Brunswick and Mannheim. We are proud to have 3 wonderful sculptures by Elsa Fraenkel in our Collection.



Learn more about Elsa Fraenkel and 400 other artists at the Ben Uri Collection

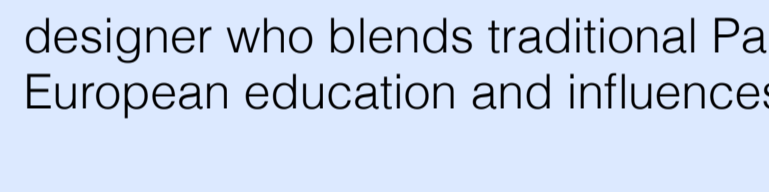
TUESDAY 4 MARCH



PODCAST OF THE WEEK

MARIAM SYED

Mariam Syed was born in Karachi, Pakistan in December 1983. She immigrated to Glasgow, Scotland in 2006 to pursue higher education in the arts. Syed is a weaver and textile designer who blends traditional Pakistani weaving practices with her European education and influences.

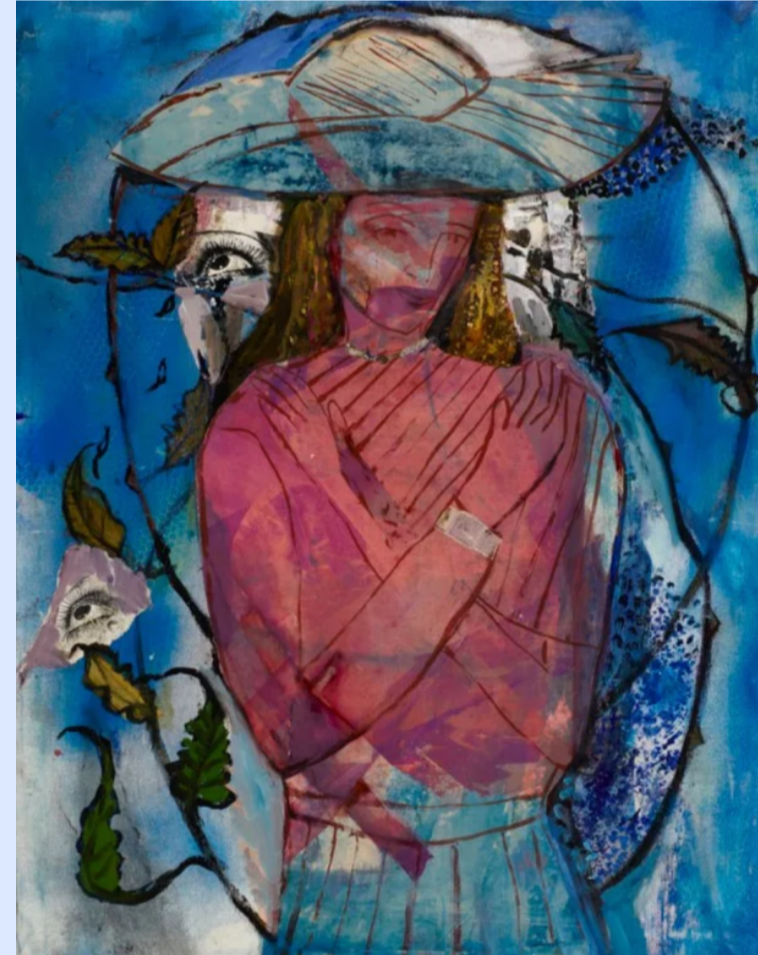


Listen to this podcast and over 100 more from Ben Uri Radio

WEDNESDAY 5 MARCH

ARTWORK OF THE WEEK

TEARS BY ALICIA MELAMED ADAMS (1927-2022)



View this work and 900 others in the Ben Uri Collection

THURSDAY 6 MARCH



PERSONALITY OF THE WEEK

EVA FRANKFURTER

Eva Frankfurter was born into a Jewish family in Berlin, Germany in 1930; following the rise of National Socialism, the Frankfurter family fled to London in 1939; she spent a year at Stotley Rough boarding school in Surrey, and was afterwards evacuated to Hertfordshire. After the war she studied at St Martin's School of Art, where her fellow students included Frank Auerbach. Quickly disillusioned with the London arts scene, she worked evenings at Lyons Corner House, painting portraits during the day of the ethnically diverse, largely immigrant population of London, among whom she lived and worked and whose lives she championed.



Learn more about Eva Frankfurter and over 3000 others from diverse backgrounds and countries, who have migrated to Britain at the Ben Uri Research Unit.

FRIDAY 7 MARCH

ESSAY OF THE WEEK

WHITECHAPEL GIRL: CLARE WINSTEN BY SARAH MACDOUGALL



Read this and 400 other essays on refugee and immigrant artists to Britain here

SATURDAY 8 MARCH

Today is International Women's Day: to inspire inclusion, challenge inequality and champion a fairer world for women.



EXHIBITION OF THE WEEK

LIBERATORS: THIRTEEN EXTRAORDINARY WOMEN ARTISTS FROM THE BEN URI COLLECTION

Alicia Melamed Adams
Chana Kowalska
Clare Winsten
Dodo
Dora Holzhandler
Edith Birkin
Elsa Fraenkel
Eva Aldbrook
Eva Frankfurter
Josefine Auspitz
Lily Delissa Joseph
Margarete Marks
Marthe Hekimi

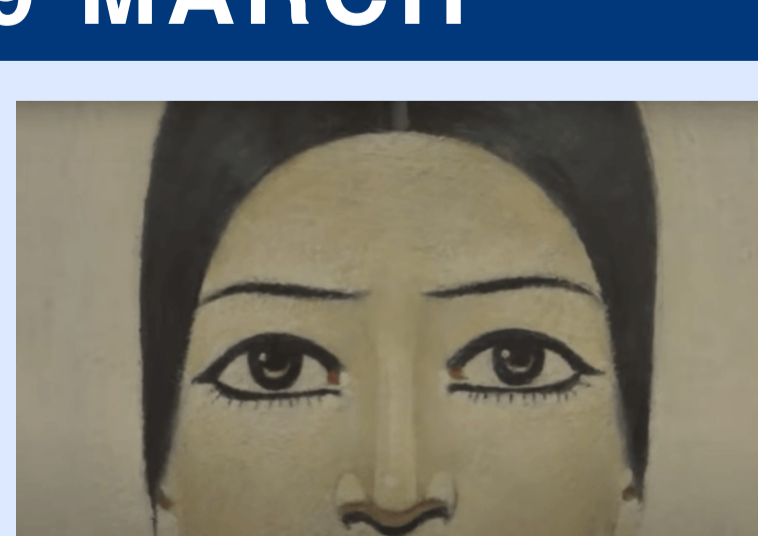
Discover this and more than 80 other exhibitions on benuri.org

SUNDAY 9 MARCH

VIDEO OF THE WEEK

FEMALE PAINTERS IN REFIGURING THE 50S EXHIBITION AT BEN URI GALLERY

Joan Eardley, Sheila Fell and Eva Frankfurter



Watch this video and 100 more videos on BU TV

Ben Uri
Research Unit

- 80+ Online and 3D Exhibitions
- 100+ Podcasts & Interviews
- 100+ School and Family programmes
- 100+ Arts and Mental Health interventions
- 100+ Films and artist insights
- 400+ Collection artist biographies
- 400+ Research papers, essays, catalogues and PhD theses
- 600+ Archive exhibitions records
- 900+ Collection artworks on benuricollection.org.uk
- 3300+ Research Unit profiles on buru.org.uk / diaspora-artists.net
- 10,000 Pages of Archives from 1915

Benuri.org & Buru.org.uk open 24/7 to suit you / Gallery exhibitions open every Wednesday to Friday at Boundary Road, London NW8